

DART MOOR

THUNDERBIRD CF FULL SUSPENSION
FRAME MANUAL

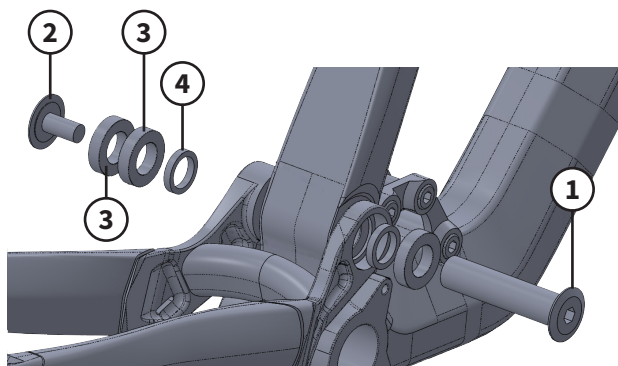




REAR SUSPENSION ASSEMBLY FOR THUNDERBIRD CF FRAME

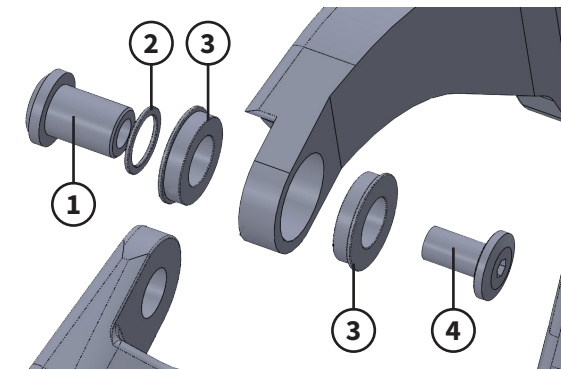
Main pivot assembly:

1. Main pivot shaft – 1 pc.
2. Main pivot bolt – 1 pc.
3. 6903 MAX LLU bearing – 3 pcs.
4. Spacer 17x23x4 – 2 pcs.



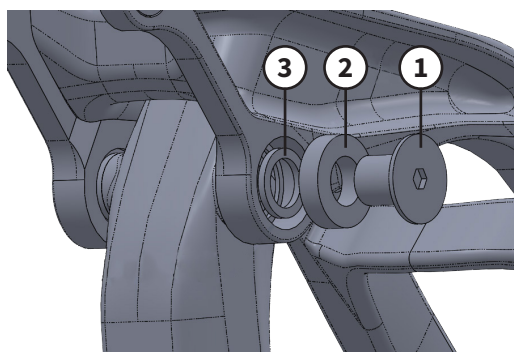
Rocker-seat stay pivot assembly:

1. Rocker-seat stay pivot shaft - 2 pcs.
2. Spacer 12x16x1 – 2 pcs.
3. F-6801 MAX LLU bearing – 4 pcs.
4. Rocker-seat stay pivot bolt – 2 pcs.



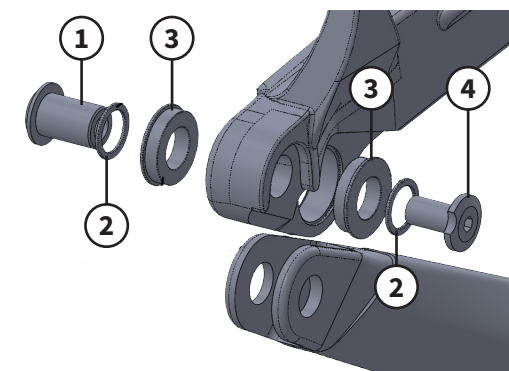
Rocker main pivot assembly:

1. Rocker main pivot bolt – 2 pcs.
2. 6902 MAX LLU bearing – 2 pcs.
3. Spacer 15x21x2.5 – 2 pcs.



Chainstay-seat stay pivot assembly (Horst Link):

1. Chainstay-seat stay pivot shaft – 2 pcs.
2. Spacer 12x16x1 – 4 pcs.
3. F-6801 MAX LLU bearing – 4 pcs.
4. Chainstay-seat stay pivot bolt - 2 pcs.



REAR SUSPENSION ASSEMBLY FOR THUNDERBIRD CF FRAME

ATTENTION !! Please check each threaded hardware connection before each ride. Tighten if necessary !!

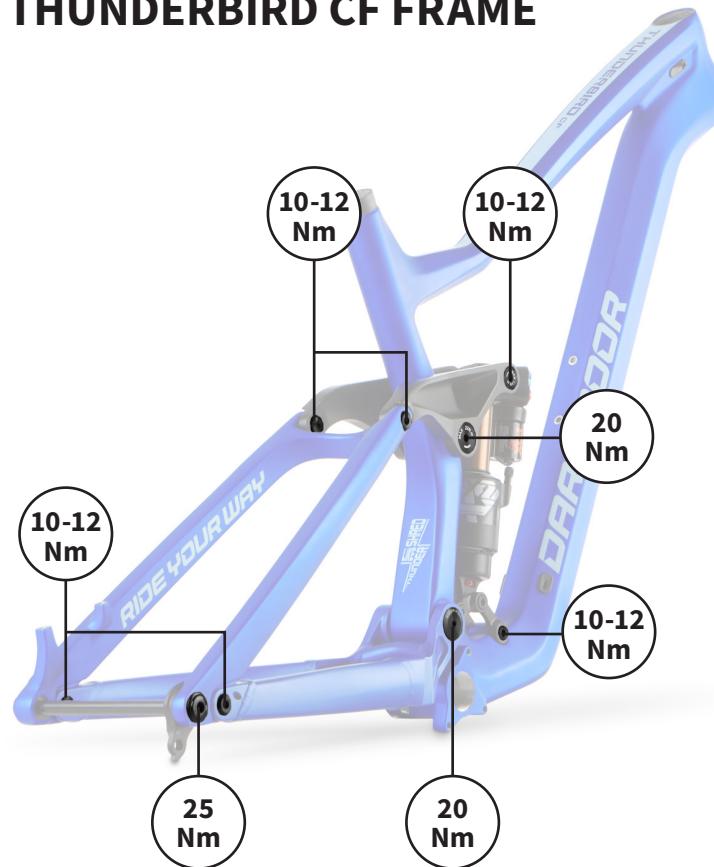
Correct tightening of each threaded hardware connection is essential. Too little force and the connection may not hold securely. Too much force and the connection may tear, stretch, distort or break the thread. Either way, incorrect torque can damage the component, which can cause you to lose control and fall. In case of doubt or problems found during your test ride, seek immediate advice from a professional bicycle mechanic.

See the instructions of the suppliers of the suspension fork, rear shock, and other parts that come with this frame. Do not use the bicycle until all problems have been resolved. Riding a bicycle with any defects may be dangerous to health and life. If you are not a qualified bicycle mechanic, do not make any of these adjustments yourself and seek advice from your local bicycle dealer.

All threaded hardware should have the thread glue (Loctite) applied. When any of the threaded hardware is removed from the frame and re-installed please inspect and re-apply the thread glue (Loctite) as required.

Tightening torques (Nm) for each threaded connection on the frame:

1. Main pivot assembly: 20 Nm
2. Rocker-seat stay pivot assembly: 10-12 Nm
3. Chainstay-seat stay pivot assembly: 10-12 Nm
4. Rocker main pivot assembly: 15 Nm
5. Upper shock bolts: 10-12 Nm
6. Lower shock bolts: 10-12 Nm
7. UDH compatible derailleur hanger/frame axle: 25 Nm



Dartmoor Thunderbirds CF frames have dedicated protectors for down tube and chainstay, made from thermoplastic elastomer



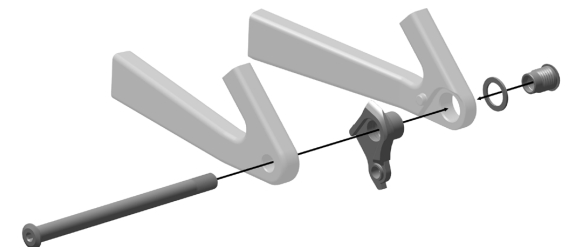
UDH compatible derailleur hanger



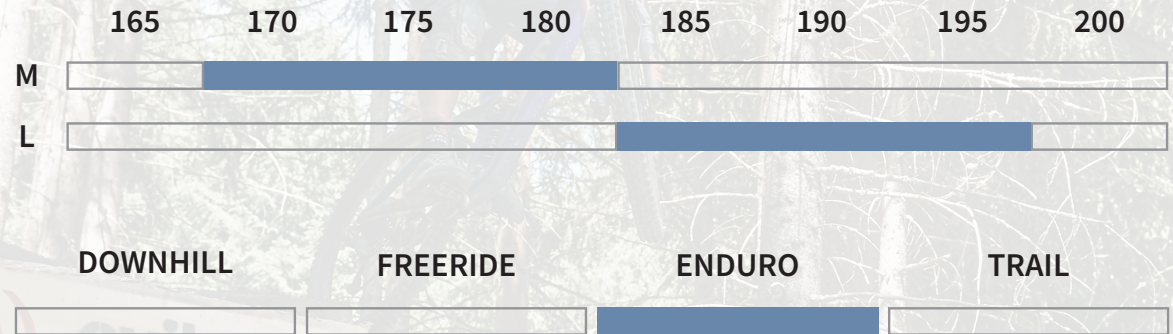
Frame axle M12xP1.0 for the Boost hub spacing 148x12mm is dedicated to use with SRAM UDH compatible gear hanger.



UDH compatible derailleur hanger/frame axle assembly



THUNDERBIRD CF FRAME FITTING & RIDING STYLE



THUNDERBIRD CF FRAME GEOMETRY

size	*calc. fork travel	reach (mm)	stack (mm)	ST (mm)	eTT (mm)	CS (mm)	HT (mm)	HT angle (°)	eST angle (°)	BB drop (mm)	WB (mm)	stand-over (mm)	wheel size (")	max. tire size (")	max. chain-ring size	**fork travel	hub size (mm)	headset type (S.H.I.S)	BB type (mm)	post diam. (mm)	clamp diam. (mm)	brake mount	max. rotor size (mm)
MEDIUM	170	455	633	437	613	435	110	64	76	27	1237	760	29	29x2.6	36T	160-170	148x12	IS42/IS52	BSA/ Euro 73	30.9	34.9	PM 180mm	203
LARGE	170	480	633	452	638	435	110	64	76	27	1262	760	29	29x2.6	36T	160-170	148x12	IS42/IS52	BSA/ Euro 73	30.9	34.9	PM 180mm	203

* fork travel used for calculating the geometry showed in this table (in millimeters)

** recommended fork travel range (in millimeters)

THUNDERBIRD CF FRAME SPECS

MATERIAL: Carbon Fiber + AL 6061-T6;

COLORS: matt Space Blue,
matt Black/Grey;

SIZES: M-L;

SHOCK w/o shock; w/Fox Float X2 Factory
OPTIONS: HSC/LSC/HSR/LSR shock

FRAME TRAVEL: 160mm;

RECOM. FORK TRAVEL: 160-170mm;

SHOCK SIZE: 205x65mm;

SHOCK HARDWARE: Trunnion/22.2x8mm;

MAX TIRE SIZE: 29x2.6";

MAX CHAINRING SIZE: 36T;

HUB SIZE: 148x12mm;

POST/CLAMP DIAM.: 30.9mm/34.9mm;

HEADSET TYPE: IS42/IS52;

DERAILLEUR HANGER: SRAM UDH

WEIGHT: 2.7kg (w/o shock).

DART
MOOR

#RIDEYOURWAY



Producent: **VELO Sp. z o.o.**
ul. Pszczyńska 305 / 44-100 Gliwice
sprzedaz@velo.com.pl
dartmoor-bikes.com